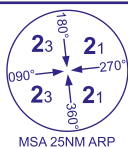
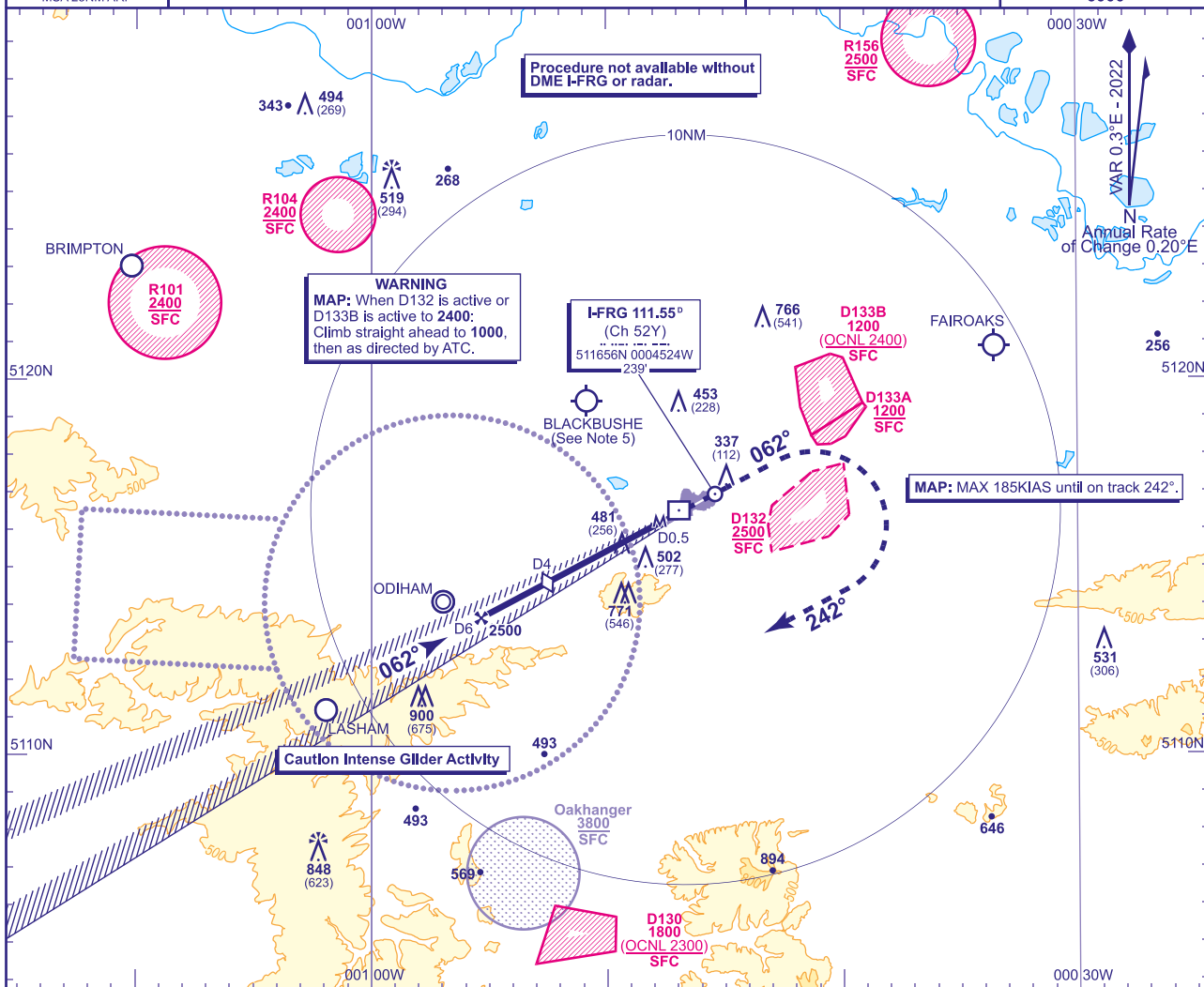


**FARNBOROUGH  
LOC/DME  
RWY 06  
(ACFT CAT A,B,C,D)**



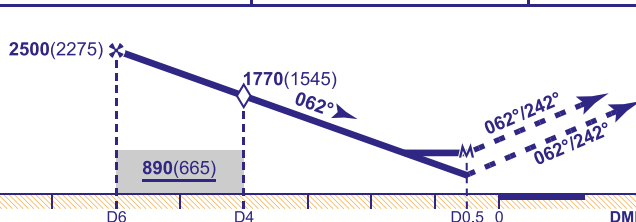
APP	134.355	125.250	FARNBOROUGH RADAR	AD ELEVATION	238
TWR	122.780		FARNBOROUGH TOWER	THR ELEVATION	225
RAD	130.055		FARNBOROUGH DIRECTOR	OBSTACLE ELEVATION	
ATIS	128.405		FARNBOROUGH INFORMATION	900 AMSL (675) (ABOVE THR)	
					BEARINGS ARE MAGNETIC

TRANSITION ALTITUDE  
6000



**RECOMMENDED PROFILE** Gradient 6.1%, 372FT/NM

DME I-FRG	5	4 (SDF)	3	2
ALT(HGT)	2140(1915)	1770(1545)	1400(1175)	1020(795)



Initial and intermediate approach as directed by radar.

MAPt I-FRG DME 0.5

Continuous climb to **3000**. Initially straight ahead to **1300**, then turn right onto track **242°**, then as directed by ATC.

Aircraft Category		A	B	C	D	Rate of descent	G/S KT	160	140	120	100	80
							FT/MIN	990	870	740	620	500
OCA (OCH)	2.5% Climb Gradient	890(665)	890(665)	890(665)	890(665)							
	5% Climb Gradient	750(525)	750(525)	750(525)	750(525)							
VM(C)OCA (OCH AAL)	South of RWY 06/24	880(642)	1020(782)	1170(932)	1170(932)							

<b>NOTE</b>	<p>1 No turns before MAPt.</p> <p>2 MSA are based on obstacle/terrain clearance. Pilots are to ensure safe navigation to remain clear of active Danger Areas.</p> <p>3 SUA/AS available on Farnborough Radar 133.440 when open; other times London Information on 124.600.</p> <p>4 CAT B,C and D no circling when EGD132 is active. CAT C and D no circling when EGD133A and EGD133B are active.</p> <p>5 Pilots are reminded of the close proximity of Blackbushe aerodrome, 3.8NM north west of Farnborough and to remain clear due to intense GA activity.</p> <p>6 See Loss of Communication Procedures in EGLF AD 2.22 Flight Procedures.</p>
-------------	---

**CHANGE (4/24):** NOTE 2 DAAIS REPLACED BY SAAIS.

AERO INFO DATE 29 JAN 24

AD 2-EGLF-8-2